



# Daily Programme.

## Time change reminder

Please be advised that early this morning, Friday, 15 January the ship's time was SET BACK BY ONE HOUR.

## Another time change this evening

Please be advised that early tomorrow morning, Saturday, 16 January the ship's time will be SET BACK BY ONE HOUR. Please set your watches BACK before retiring this evening, Friday, 15 January.

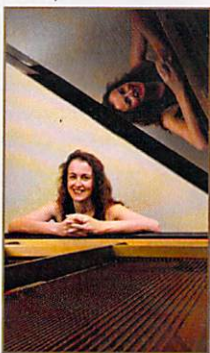
## From the navigator

Yesterday once everybody was on board QUEEN VICTORIA slipped her mooring lines and proceeded out of the breakwater. Once clear of the breakwater QUEEN VICTORIA disembarked the pilot and set a south westerly course which marked the beginning of our transatlantic crossing towards Port Canaveral.

## Pianist, Helen Leek 'Scenes of Childhood'

Music for children has been a fascinating challenge and inspiration for many classical composers. Helen reveals the wealth of imagination that musicians across the ages have brought when writing for, and about the young.

**At 2.00pm,  
Queens Room,  
deck 2, midships**



## Today's Cunard insight lecture program.

**Dr. Mark Baldwin - Military Historian**

**At 11.00am**

### 'What's The Use Of Intelligence?'

Some examples of the effective use of military Intelligence and Counter-Intelligence, 1900-1945.

**Royal Court Theatre, decks 1,2&3, forward, A stairway**



## Tonight's Entertainment.

One Of Britain's Finest Entertainers.

## Philip Hitchcock

The international reputation that Philip Hitchcock has built for himself is certainly no illusion. Philip has graced the stage of the London Palladium, and has made the breakthrough Stateside, having performed at the renowned Tropicana in Las Vegas. He has been crowned the British Magical Grand Prix Champion. An evening not to be missed. Presented by Entertainment Manager, Sally Sagoe.



**At 8.30pm & 10.30pm, Royal Court Theatre, decks 1,2&3, forward, A stairway**

## Dixieland Jazz Night

Swing to the sounds of New Orleans with a selection of jazz tunes performed by members of the Royal Court Theatre Orchestra.



**At 9.15pm until 10.15pm  
& 11.15pm until late  
Golden Lion Pub, deck 2, forward**

## Ballroom and Latin Dance Music



**From 9.15pm,  
Queens Room, deck 2, midships**

## Make A Future Cruise Down Payment To Receive On Board Credit

Call Laura and Dragana on 33033 or 33034 to make a deposit and then, once you have decided upon your destination, book your holiday direct with Cunard or with your travel agent.

You can receive up to \$400 per person on voyages over 7 days.

## Veuve Clicquot Champagne Bar

The Veuve Clicquot champagne bar is the best place to celebrate any special occasion and it has the perfect ambiance for you to enjoy a glass of Champagne before or after dinner.

**Sea days from 10.00am to 11.00pm  
Port days from 5.00pm to 11.00pm  
deck 2, midships, Grand Lobby, B stairway**

## In today's Discover...

Sip on an exclusive selection of stunning Martini's while listening to the resident pianist. Renew your wedding vows or celebrate your special day on board by contacting the Purser's Office. Learn how your Ipad functions by registering for the first Ipad class with the Guest Computer Services Manager.





# Today's activities.

**6am** 6.00am Rise N' Shine  
(repeated continuously until 12.00pm)  
TV Ch. 21

6.00am Cunard Radio Live  
TV Ch. 43 (available 24 hours a day)

**7am** 7.00am Fitness: Sunrise Stretch  
Royal Gymnasium, deck 9, forward,  
A stairway (until 7.30am)

7.30am Fitness: Fab Abs Class  
Royal Gymnasium, deck 9, forward,  
A stairway (until 8.00am)

**8am** 8.00am Fitness:  
Pure Form Pilates (\$12)  
Royal Gymnasium, deck 9, forward,  
A stairway (a fee applies, until 8.45am)

**9am** 9.00am Fitness:  
Tour De Cycle (\$12)  
Royal Gymnasium, deck 9, forward,  
A stairway (a fee applies, until 9.45am)

9.00am Advanced Line  
Dancing Class  
Queens Room, deck 2,  
midships, B stairway ↗

9.00am Decathlon Sign Up  
Sign up for the Decathlon which starts  
tomorrow, Saturday, 16 January.  
Table Tennis Area, deck 9, forward,  
A stairway, port side (Adults only)

9.30am Christian Fellowship  
Admiral's Lounge, deck 10, forward,  
A stairway (until 10.15am)

9.30am Deck Quoits  
Competition 🏆  
Deck Quoits Court, deck 10, forward,  
A stairway, port side (Adults only)

**10am** 10.00am Morning Trivia 🏆  
Golden Lion Pub, deck 2,  
forward, A stairway

10.00am Beginners Bridge Class  
Card Room, deck 3, midships,  
Grand Lobby (until 11.00am)

10.00am Watercolour Art Class  
Art Kits can be purchased for \$35.  
Britannia Restaurant, deck 3, aft,  
C stairway (until 12.00pm)

10.00am Bingo Ticket Sales  
Casino Cashier's Desk, deck 2,  
forward, A stairway (until 2.45pm)

10.00am Line Dance Class  
Queens Room, deck 2,  
midships, B stairway ↗

10.00am Camera Basics  
Come and join us as we talk you  
through your camera as you discover  
the basics from deleting a photo  
to the secrets you may not have  
discovered yet.  
ConneXions 2&3, deck 3, midships,  
B stairway (until 10.45am)

**11am** 11.00am Burn Fat Faster  
Royal Gymnasium, deck 9, forward,  
A stairway (until 11.45am)

11.00am Intermediate Bridge Class  
Card Room, deck 3, midships,  
Grand Lobby (until 12.00pm)

**11am** 11.00am Killer Darts Competition 🏆  
Golden Lion Pub, deck 2,  
forward, A stairway

11.00am Solo Travellers'  
Coffee Corner  
With Social Hostess, Jessica Burke.  
Winter Garden, deck 9, midships,  
B stairway (until 11.45am)

11.00am Diamond,  
A Gem Like No Other  
The most sought after stone on the  
planet. But why? Join Agatha, our  
Jewellery Specialist, as she talks about  
the brief history of the diamond and  
how they became known as the 'girl's  
best friend'. Agatha will showcase her  
white and coloured diamond collection  
after her informative talk this morning.  
ConneXions 2&3, deck 3, midships,  
B stairway (until 11.45am)

11.00am Foil Fencing Class  
Queens Room, deck 2, midships,  
B stairway (Adults only) ↗

11.00am Anti-Ageing Miracles  
With Dr. Diana Huapaya  
Royal Spa, deck 9, forward,  
A stairway (until 11.45am)

11.00am Cunard Insights:  
Dr. Mark Baldwin  
'What's the use of Intelligence?'  
Some examples of the effective use  
of military Intelligence and Counter-  
Intelligence, 1900-1945.  
Royal Court Theatre, decks 1, 2&3,  
forward, A stairway ↗

11.00am Chairobics With Kim  
Hemispheres, deck 10,  
forward, A stairway

11.50am Registration for Ipad  
Academy: Using an iPad 1  
ConneXions 1, deck 1, midships,  
Grand Lobby (until 12.00pm)

**12pm** 12.00pm Navigational  
Announcement  
Throughout the ship.

12.00pm QUEEN VICTORIA  
Vocalists - Guest Choir  
Hemispheres, deck 10, forward,  
A stairway (until 1.00pm)

12.00pm Blackjack Tournament  
Qualifying Rounds  
Empire Casino, deck 2,  
forward, A stairway

12.00pm L.S. Lowry:  
There's More To Him  
Than Matchstick Men

Join Charlotte in the gallery today  
as we learn more about one of the  
greatest British painters of the  
twentieth century. Following the talk  
join us in the gallery as we unveil two  
stunning hand signed limited editions.  
ConneXions 2&3, deck 3, midships,  
B stairway (until 12.45pm)

12.00pm Super Slimming For  
Stubborn Fat  
Royal Spa, deck 9, forward,  
A stairway (until 12.45pm)

**12pm** 12.05pm iPad Academy:  
Using an iPad 1

'Getting Started'  
Learn how to set up and use your iPad.  
A definite must for all iPad owners.  
(Part 1 of 4, a nominal fee of \$15 applies,  
maximum 20 people).

ConneXions 1, deck 1, midships,  
Grand Lobby (until 1.00pm)

12.15pm Ballroom Dance Class  
Beginners Salsa with international dance  
couple, Dan and Olena.

Queens Room, deck 2, midships,  
B stairway (until 1.00pm) ↗

12.30pm International Band  
Synergy

Lido Pool, deck 9, C stairway (until 1.30pm)  
Inclement weather venue:  
Winter Garden, deck 9, B stairway

**1pm** 1.00pm Facial & Puffy Eyes  
Six-Star Skincare

Complimentary Collagen Eye and Neck  
treatment for all those who attend and a  
complimentary consultation.

Royal Spa, deck 9, forward,  
A stairway (until 1.45pm)

1.30pm Today's Film:  
Crocodile Dundee

An American reporter goes to the  
Australian outback to meet an eccentric  
crocodile poacher and invites him to  
New York City. Starring: Paul Hogan,  
Linda Kozlowski and John Meillon.  
Directed by Peter Faiman. PG-13.  
Duration is 97 minutes and was  
released in 1986.

Royal Court Theatre, decks 1,2&3,  
forward, A stairway ↗

1.45pm Oh... What A Tune  
With DJ Graham 🎧

Winter Garden, deck 9,  
midships, B stairway

**2pm** 2.00pm Chairobics  
With Cordelia  
Hemispheres, deck 10,  
forward, A stairway

2.00pm Social Whist Play  
ConneXions 2, deck 3, midships,  
B stairway (until 4.00pm)

2.00pm Social Bridge  
And Game Play  
ConneXions 3, deck 3, midships,  
B stairway (until 4.00pm)

2.00pm Watercolour Art Class  
Art Kits can be purchased for \$35.  
Britannia Restaurant, deck 3, aft,  
C stairway (until 4.00pm)

2.00pm Live Demonstration  
Of Acupuncture

Let's discover the benefits of  
Acupuncture together.  
With David Vieira, licensed  
Acupuncturist and healing therapist.

Royal Spa, deck 9, forward,  
A stairway (until 2.45pm)

2.00pm Relieving Foot,  
Knee And Back Pain  
Royal Gymnasium, deck 9, forward,  
A stairway (until 2.45pm)



**2pm** 2.00pm **Classical Concert:**  
Pianist Helen Leek  
'Scenes of Childhood'  
Music for children has been a fascinating challenge and inspiration for many classical composers. Here, pianist Helen Leek reveals the wealth of imagination that musicians across the ages have brought when writing for, and about the young.  
**Queens Room, deck 2, midships, B stairway (until 2.45pm) ↗**

2.00pm **Baggo Competition** 🎯  
**Sports Area, deck 10, midships, B stairway, port side (until 4.00pm)**

2.00pm **Duplicate Bridge Play** 🎯  
**Card Room, deck 3, midships, Grand Lobby (until 2.45pm)**

2.30pm **Blackjack Tournament Grand Final**  
**Empire Casino, deck 2, forward, A stairway**

2.30pm **Quizzical Corner** 🎯  
**Winter Garden, deck 9, midships, B stairway**

**3pm** 3.00pm **Snowball Jackpot Bingo**  
The jackpot stands at over \$600. It can be won within the first 47 numbers called.  
**Golden Lion Pub, deck 2, forward, A stairway**

3.00pm **Masonic Gathering**  
**Admiral's Lounge, deck 10, forward, A stairway (until 3.45pm)**

3.00pm **Truth and Myths About Facial Rejuvenation**  
**Royal Spa, deck 9, forward, A stairway (until 3.45pm)**

3.00pm **Craft Class:**  
Azorean Update - Entries  
**Hemispheres, deck 10, forward, A stairway (until 3.45pm)**

3.00pm **Hostess Corner:**  
Needlework & Knitting  
This is not a class.  
**Winter Garden, deck 9, midships, B stairway (until 3.45pm)**

3.15pm **Challenge QUEEN VICTORIA Scavenger Hunt** 🎯  
**Table Tennis Area, deck 9, forward, A stairway, port side (Adults only)**

3.30pm **Champagne Afternoon Tea**  
**Verandah Restaurant, deck 2, midships, B stairway**

3.30pm **Afternoon Tea**  
Featuring harpist Lara Szabo.  
**Queens Room, deck 2, midships, B stairway (until 4.30pm) ↗**

**4pm** 4.00pm **Fitness: Body Sculpt Boot Camp (\$30)**  
**Royal Gymnasium, deck 9, forward, A stairway (until 4.30pm)**

4.00pm **iStudy Seminar:**  
iPod, iPad, iPhone  
In this popular seminar we discuss these Apple devices and some of the features of iOS8.  
**ConneXions 1, deck 1, midships, Grand Lobby (until 4.30pm)**

**4pm** 4.15pm **Afternoon Trivia** 🎯  
**Golden Lion Pub, deck 2, forward, A stairway**

4.30pm **Table Tennis Competition** 🎯  
**Table Tennis Area, deck 9, forward, A stairway, port side (Adults only)**

**5pm** 5.00pm **Rise N' Shine**  
(repeated continuously until 7.00pm)  
**TV Ch. 21**

5.00pm **Ballroom Dance Class**  
Repeat of this afternoon's class.  
**Queens Room, deck 2, midships, B stairway (until 5.45pm) ↗**

5.00pm **Friends Of Dorothy LGBT**  
**Commodore Club (stbd), deck 10, forward, A stairway (until 5.45pm)**

5.15pm **Jewish Sabbath**  
Led by fellow guests.  
**Card Room, deck 3, midships, Grand Lobby**

5.30pm **Friends Of Bill W.**  
**Admiral's Lounge, deck 10, forward, A stairway (until 6.15pm)**

5.30pm **Harpist Lara Szabo**  
**Chart Room, deck 2, aft, C stairway (until 6.15pm)**

5.30pm **Pianist Glenn Monie**  
**Golden Lion Pub, deck 2, forward, A stairway (until 6.15pm)**

5.30pm **Pianist Dmitry Khodorovsky**  
**Grand Lobby, deck 1, midships, B stairway (until 6.15pm)**

**6pm** 6.00pm **Fitness:**  
Sundown Stretch  
**Royal Gymnasium, deck 9, forward, A stairway (until 6.30pm)**

**7pm** 7.00pm **Picture Perfect Quiz**  
**Golden Lion Pub, deck 2, A stairway**

7.30pm **Harpist Lara Szabo**  
**Chart Room, deck 2, aft, C stairway (until 8.30pm)**

7.30pm **Pianist Glenn Monie**  
**Golden Lion Pub, deck 2, forward, A stairway (until 8.00pm)**

7.45pm **Cocktail Pianist**  
Carl Nuschi  
**Commodore Club, deck 10, forward, A stairway (until 8.30pm)**

7.45pm **Recorded Ballroom & Latin Music**  
**Hemispheres, deck 10, forward, A stairway (until 8.30pm)**

7.45pm **The Adagio**  
String Quartet  
**Verandah Restaurant, deck 2, midships, B stairway (until 8.30pm)**

**8pm** 8.00pm **Early Evening**  
Wipeout Trivia  
**Golden Lion Pub, deck 2, A stairway**

8.30pm **Show Time Tonight:**  
Philip Hitchcock  
**Royal Court Theatre, decks 1, 2&3, forward, A stairway ↗**

**9pm** 9.15pm **Dixieland Jazz Night**  
Swing to the sounds of New Orleans with a selection of jazz tunes performed by members of the Royal Court Theatre Orchestra.  
**Golden Lion Pub, deck 2, forward, A stairway (until 10.15pm)**

9.15pm **Harpist Lara Szabo**  
**Chart Room, deck 2, aft, C stairway (until 10.00pm)**

9.15pm **The Adagio**  
String Quartet  
**Verandah Restaurant, deck 2, midships, B stairway (until 10.00pm)**

9.15pm **International Band**  
Synergy  
**Adults Only. Hemispheres, deck 10, forward, A stairway (until 10.15pm)**

9.15pm **Ballrom & Latin**  
Dance Music  
Enjoy all your favourite Ballroom and Latin dance music. With the Queens Room Orchestra and vocalist Jim McCallister.  
**Queens Room, deck 2, midships, B stairway (until late) ↗**

9.30pm **Cocktail Pianist**  
Carl Nuschi  
Sip on an exclusive selection of stunning Martini's complimented by gourmet stuffed olives while listening to the evening melodies.  
**Commodore Club, deck 10, forward, A stairway (until late)**

**10pm** 10.15pm **Pianist Dmitry Khodorovsky**  
**Chart Room, deck 2, aft, C stairway (until 11.00pm)**

10.15pm **DJ Graham's Request**  
Express Hour  
**Hemispheres, deck 10, forward, A stairway (until 11.15pm)**

10.15pm **The Adagio**  
String Quartet  
**Verandah Restaurant, deck 2, midships, B stairway (until 11.00pm)**

10.30pm **Show Time Tonight:**  
Philip Hitchcock  
**Royal Court Theatre, decks 1, 2&3, forward, A stairway ↗**

10.30pm **Gridlocked**  
Answer questions without losing your points.  
**Golden Lion Pub, deck 2, forward, A stairway (until 11.15pm)**

**11pm** 11.15pm **International Band**  
Synergy  
**Adults Only. Hemispheres, deck 10, forward, A stairway (until 12.15am)**

11.15pm **Dixieland Jazz**  
**Golden Lion Pub, deck 2, forward, A stairway (until late)**

11.15pm **Pianist Dmitry Khodorovsky**  
**Chart Room, deck 2, aft, C stairway (until late)**

**12am** 12.15am **DJ Graham's Late**  
Night Dancing  
**Adults Only. Hemispheres, deck 10, forward, A stairway (until late)**



## Today's Opening Hours.

### Queens and Princess Grill Restaurants

Breakfast	8.00am to 9.30am
Lunch	12.30pm to 2.00pm
Dinner	6.30pm to 9.00pm

### Britannia Restaurant

Breakfast	8.00am to 9.30am
Lunch	12.30pm to 2.00pm
Early dinner	6.00pm, last order 6.30pm
Late dinner	8.30pm, last order 9.00pm

### Verandah Restaurant

Contemporary French cuisine incorporating magical pairings of flavours whilst staying true to authentic French food and tradition.

Prix fixe charges apply. For reservations please dial 14351.

Lunch (\$15)	12.30pm to 2.00pm
Dinner (\$24)	6.30pm to 9.00pm

### Lido Buffet

Continental breakfast	4.00am to 6.30am
Full breakfast	6.30am to 11.30am
Lunch	11.30am to 3.00pm
Afternoon snack	3.00pm to 6.00pm
Buffet Dinner: British	6.00pm to 11.00pm
Alternative Dining: La Piazza	6.30pm to 9.00pm

A tribute to the vibrancy of Italy. La Piazza explores the regional influences that place Italian cooking amongst the finest in the world. Bookings can be made by dialling 14315.

A charge of \$15 applies.

Late snack	11.00pm to 4.00am
------------	-------------------

### Bars and Lounges

Cafe Carinthia	7.00am to 12.00am
Chart Room	10.00am to late
Commodore Club	9.00am to late
Lido Bar	10.00am to 10.00pm
Golden Lion Pub	10.00am to late
Pub Lunch	12.00pm to 2.30pm
Hemispheres	9.30pm to late
Midships Bar	5.00pm to 12.00am
Open with waiter service during the daytime.	
Champagne Bar	10.00am to 11.00pm
Winter Garden	9.00am to 9.00pm

### Facilities and Retail

Clarendon Fine Art	10.00am to 10.00pm
Bookshop	9.00am to 1.00pm & 2.00pm to 6.00pm
Empire Casino Cash Desk	10.00am to late
Tables	11.00am to late

(Limited tables available from 11.00am to 8.00pm)

ConneXions 1: Manager	9.00am to 11.00am, 2.30pm to 3.30pm & 5.30pm to 7.00pm
Internet Centre : Deck 3 (Assistance)	9.00am to 11.00am & 3.00pm to 4.00pm

Library	9.00am to 6.00pm
The Ship's Photographer	9.00am to 9.00pm
Royal Arcade Main Shops	9.00am to 9.00pm
Cunardia	9.00am to 8.30pm
Royal Gymnasium	6.00am to 8.00pm
Royal Spa	8.00am to 8.00pm

Tour Office	9.00am to 12.00pm & 3.00pm to 6.00pm
Voyage Sales	10.00am to 12.00pm & 3.00pm to 6.00pm
The Play Zone	9.00am to 12.00pm, 2.00pm to 5.00pm & 6.00pm to 11.00pm
The Kids Zone	10.00am to 12.00pm, 2.00pm to 5.00pm & 6.00pm to 11.00pm

<b>Medical Centre</b>	<b>9.00am to 11.00am &amp; 4.00pm to 6.00pm</b>
-----------------------	---

**Please dial 911 or 999 for medical emergencies only.**

### Under-age drinking and gambling.

Guests under 18 years of age (21 in US ports and territorial waters) will not be served alcoholic beverages nor are they to consume them. You must also be 18 or above (21 in US ports and territorial waters) to be in the Casino or Hemispheres nightclub. Please understand that you may be requested to show identification indicating date of birth.

### Tonight's dress code: informal.

Jacket required, tie optional for gentlemen, cocktail dress, stylish separates or equivalent for ladies. After 6.00pm, shorts and blue or worn denim (for men and women); sandals and sleeveless tops (for men) are not considered appropriate within the ship. Any guests wishing to dress more casually are welcome to dine in the Lido buffet on deck 9 and relax in the Winter Garden, but should not use other areas within the ship, including our Alternative Dining Restaurants, out of respect for their fellow guests.

### Hand antibacterial units in the Lido.

We encourage all of our guests to assist us in retaining a healthy ship by using the hand antibacterial before proceeding in to the buffet area. Dispensers are located at the entrances to the buffet area.

### Entering the US: ESTA and Visa requirements.

Guests of the following nationalities who are not in possession of a valid US Visa are required to have an ESTA. If you did not apply for an ESTA yet, please do so via [www.usavisaonline.com/esta](http://www.usavisaonline.com/esta) in order to ensure a smooth immigration inspection upon arrival into Port Canaveral on Thursday, 21 January 2016. If you are in possession of a valid US visa (B1/B2 or other type of visa) please advise the Purser's Office on extension 33000 no later than 12.00pm (noon) on Monday, 18 January 2016.

The following nationalities are eligible to apply for the ESTA:

Andorra, Australia, Austria, Belgium, Brunei, Chile, Czech Republic\*, Denmark, Estonia\*, Finland, France, Germany, Greece\*, Hungary\*, Iceland, Ireland, Italy, Japan, Latvia\*, Liechtenstein, Lithuania\*, Luxembourg, Malta\*, Monaco, Netherlands, New Zealand, Norway, Portugal, San Marino, Singapore, Slovakia\*, Slovenia, South Korea\*, Spain, Sweden, Switzerland, Taiwan and United Kingdom.

\*Indicates that those passports must be biometric to be eligible to apply for an ESTA.

### White star luggage.

You are able to make arrangements to have "White Star Luggage Service" transport your luggage home from QUEEN VICTORIA from your disembarkation port of Port Everglades. This service is provided through Fed-Ex and DHL Worldwide shipment service. If you are disembarking in Port Everglades on Friday, 22 January and would like to enquire about this service, visit the Purser's Office on deck 1 in the Grand Lobby from 10.00am until 11.00am this morning, Friday, 15 January to speak to the White Star Luggage Coordinator. Leave your details at the Purser's Office and the White Star Luggage Coordinator will contact you with a quote. The deadline to register for this service is Sunday, 17 January at 6.00pm.

### Masonic lunch.

On Sunday, 17 January 2016, we will be holding a Masonic Lunch in the Verandah Restaurant on deck 2, midships, Grand Lobby at 12.30pm. There will be a \$15 charge for lunch. Contact the Purser's Office if you would like to attend. Wives and Lodge Widows are also welcome to attend.

### Deck chairs.

Deck chairs operate on a first-come, first served basis and cannot be reserved. For the consideration of all guests, please ensure you take your belongings when leaving a deck chair for a period of time, or they may be removed. For your convenience one pool towel is reserved for each lounge. Should you need more, please utilise the one that is in your stateroom.

### Postage.

A Concierge Postal Service is available for you to send letters and postcards in every port. The rate per letter/postcard for this voyage is \$1.40, this rate covers worldwide postage. If you have already purchased your own postage stamps you may leave the mail at the Purser's Office for posting. The deadline for sending mail is 2 hours before sailing when the ship is docked and 3 hours when we are at anchor.