



Crystal Symphony • Cruise 6203 No. 3

Friday, January 29, 2016

At Sea, En Route to
Puerto Madryn, Argentina

Sunrise: 6:02am • Sunset: 8:09pm

*Sunrise/Sunset times are given in Ship's
time and are approximate to the estimated
position of the ship.*

Elegance at Sea: The Beauty of Crystal Symphony

Crystal Cruises proudly welcomes you to your home-away-from-home

Crystal Symphony initially set sail on April 18, 1995, from the Kværner Masa Yard in Turku, Finland. Designed by noted ship designer, Robert Tillberg, of Sweden, she is 781 feet in length (238m) and 98.5 feet wide (30m). The draft is 24.9 feet (7.6m). She has a cruising speed of 20 knots, a maximum speed of 23 knots and is propelled by two electric motors powered by six diesel engines with an output of 53,000 horsepower. With a capacity of 922 guests and a crew of 566, Crystal Symphony maintains Crystal Cruises' mark of excellence with one of the best guest to crew ratios in cruise industry.

What does a dream like Crystal Symphony cost? Over \$250 million in 1995. Plus, several multi-million dollar refurbishments — the most recent in

September, 2014 — to further enhance this elegant ship.

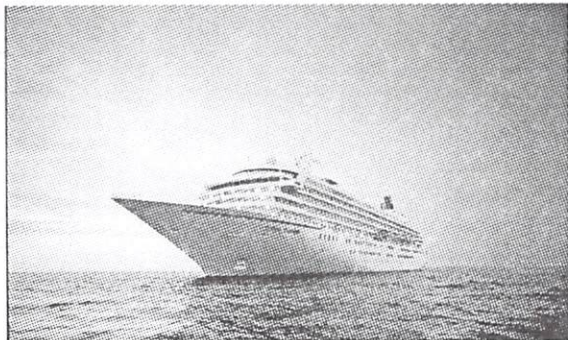
Crystal Deck 5

The social hub of the ship, the Crystal Plaza is an open and elegant space where our Reception Desk, Concierges, Shore Excursions staff, Crystal Society Hostess/Host and Cruise Sales Consultant are located. Our exquisite Crystal Dining Room, which features Modern Cuisine and Crystal Classics, is located just beyond the Crystal Society desk.

The entire Crystal Plaza was recently renovated during Crystal Symphony's dry dock in Hamburg, Germany. Our towering water fountain features a refreshed look and is complemented by new bespoke carpets, upholstery and tables adorned with fresh flowers. The Crystal Cove piano bar has been up-

dated with up-cycled furniture, a contrasting indigo and cream color palette, new artwork and metal-work cocktail tables with inspiration derived from luxurious private yachts. The seating area has been reconfigured with the bar serving as the centerpiece, making it the

continued...



Black Tie Optional: A Black Tie Optional evening offers our guests a celebratory opportunity to dress more formally.

Women's Black Tie Optional includes:
A Formal cocktail dress, Evening gown or Dressy evening separates;

Men's Black Tie Optional includes:
Dark suit with or without a tie or a Tuxedo

Today's Notices

For Your Protection

In order to maintain our high level of sanitary conditions and in accordance with Crystal Cruises' health regulations, all guests are asked to sanitize their hands when returning to the ship. A dispenser is located at the gangway for this purpose. We also recommend all guests wash their hands often and especially before meals. Thank you for your cooperation.

Captain's Welcome Reception

All guests are cordially invited to join Captain **Mark Symonds** in the Starlite Club at **7:45pm**. While the Captain is very pleased to meet all of you, he and the other staff receiving you refrain from shaking hands in order to provide the most effective preventative sanitary measures.

Concert Production

Elio Pace, the Crystal Ensemble of Singers and Dancers and the Galaxy Orchestra present our new **Concert Production, Rocket Man: A Tribute to Elton John** at **8:45pm** and **10:30pm** in the Galaxy Lounge. Blast into a musical stratosphere as chart-topping hits ignite our concert production. The Crystal Ensemble of Singers and Dancers, and the Galaxy Orchestra are captained by tribute artist Elio Pace in a piano-propelled production orbiting through decades of stellar sounds by prolific singer/songwriter Sir Elton John.

...from previous page

perfect place to socialize and meet for drinks.

The Medical Center is located forward of the Crystal Plaza lobby area on the starboard (right) side of the ship.

Entertainment Tiffany Deck 6

The main entertainment deck on Crystal Symphony is Tiffany Deck 6. The Starlite Club, located mid ship, offers panoramic views of the ocean with its innovative, free-flowing design featuring a dance floor and bandstand. This elegant club also hosts occasional cabaret performances.

The Galaxy Lounge, all the way forward on Tiffany Deck 6, is a 402-seat showroom sloped around a spacious hydraulic stage to accommodate Crystal Cruises' spectacular, award-winning production shows, world-class guest entertainers and variety acts.

The Library on Tiffany Deck 6 Midship offers over 2,000 books and a wide selection of movies on DVD plus audio books which can be checked out daily.

Computer University@Sea offers a variety of free classes and allows guests to stay in touch electronically with their homes and offices. Next door, Bridge players can enjoy the spacious and well-lit Bridge Lounge, with comfortable tables for duplicate and rubber games. Daily Bridge instruction is offered on days at sea, with no-host Bridge games played every afternoon.

The Avenue of the Stars shopping promenade has three specialty shops around the Tiffany Deck 6 atrium: Apropos, Crystal Collection and Facets, which offers fine jewelry and collectibles.

On the Starboard side of Tiffany Deck 6 is the Crystal Photo Shop where guests can purchase photos and other photogra-

phy-related items from our professional team of photography professionals.

The popular Avenue Saloon, Connoisseur Club and The Bistro are also located on Tiffany Deck 6. The Avenue Saloon, featuring piano bar entertainment, is a comfortable place to meet before and after dinner for cocktails. The adjacent Connoisseur Club offers a fine selection of international cigars, cognac and port wines. The Bistro, which now incorporates new seating and décor, serves international coffees and teas, snacks and a selection of wines by the glass.

Also on Deck 6 is our cinema, The Hollywood Theatre, where recent-release movies are screened complete with a special audio device system for the hearing impaired.

During our recent dry dock, the Crystal Casino was completely reconfigured. The wall on the port side wall was removed, creating a more open, accessible space with a modified layout and new slot machines. The Crystal Casino has four blackjack tables, roulette, craps, three-card poker and mini-Baccarat. One of the highlights is the chance to play Texas Hold 'Em poker.

Adjacent to the Crystal Casino is our innovative nightclub — LUXE. Featuring Philippe Starck furniture and ambient lighting that changes throughout the evening, LUXE is another unique place to gather before or after our shows, or while enjoying the gaming at the casino.

Our specialty restaurants, Silk Road and The Sushi Bar, and Prego are both located on the port side of Tiffany Deck 6 Aft. Silk Road and The Sushi Bar, added to Crystal Symphony in 2008, offer the inspired cuisine of Master Chef Nobu Matsuhisa. Our Venetian-inspired specialty restaurant, Prego, offers delicious Italian cuisine. The restaurants

have separate entrances and breathtaking views of the ocean.

The Vintage Room is one of the most unique dining experiences offered at sea. Located between the Starlite Club and Silk Road on the port side of Tiffany Deck 6 Aft, this venue was created to promote wine education and the vast range of fine wine selections offered on board.

In addition to occasional daytime wine tastings and discussions, guests may partake in a variety of wine "themed" dinners on any evening of their choice during the cruise.

Promenade Deck 7

The full outside Promenade Deck 7 of Crystal Symphony has been designed for walking and jogging enthusiasts; 3.7 laps around the Promenade deck equals one mile.

Lido Deck 11

On Lido Deck 11, you will find our Seahorse Pool — an outdoor pool suitable for doing laps. Adjacent to the Seahorse Pool is a new oversize Jacuzzi® with a special water feature, which was added during the ship's recent refurbishment.

The Lido Café is our casual dining area for breakfast and lunch. The aft dining area of the Lido Café has a canopy so guests can enjoy the shade while dining outside. Under the retractable dome is the outdoor Trident Bar and Grill, which serves hot dogs, hamburgers, pizza and sandwiches. There is also a full bar and an adjoining ice cream bar. The Trident Grill also offers a Late-Risers Breakfast, plus casual dining on selected evenings.

With its panoramic view and comfortable ambiance, the Palm Court is the ideal place for quiet relaxation during the day, afternoon tea service, intimate classical concerts, plus cocktails and after-dinner drinks in the evening.

continued...



...from previous page

Lido Deck 11's youth activities center includes the Fantasia children's playroom plus Waves teen center and video arcade.

Sun Deck 12

The Crystal Spa & Salon incorporates sweeping ocean views and Feng Shui design with eight treatment rooms, a relaxation area, private canopied teak sundeck, and state-of-the-art steam shower and sauna area. During Crystal Symphony's recent renovation, the pedicure area was upgraded and new tiles were added throughout the spa facilities.

Other highlights include a custom-designed manicure area and the luxurious dry float bed suite, which contains a sensory bed to create a feeling of weightlessness, ideal for "Aroma Spa" and other treatments.

During the recent dry dock, a new outdoor Fitness Garden was added to the aft decks 7, 8 and 12 where guests can work out with a curated "Movement Journey" that utilizes special stainless steel equipment and the ability to personalize your workout to fit your level of fitness.

At our indoor Fitness Center, guests can train like an Olympic champion on new equipment by TechnoGym — the official choice for many Olympic and World Cup competitors. In addition to new TechnoGym cardio machines, the Fitness Center has an expanded collection of TechnoGym's Kinesis™ equipment.

With all of this high-tech new equipment, our complimentary yoga, Pilates mat classes, aerobics and personal training instruction, the Fitness Center and Fitness Garden offers you the opportunity to stay in shape while surrounded by the open sea or your favorite port of call.

Sun Deck 12 is also home for the sports fan. The Wimbledon paddle tennis court, table tennis, golf driving nets and putting green will provide hours of enjoyment.

The Staterooms

Crystal Symphony was the first luxury ship to feature private verandahs or large picture windows (not portholes) in all of its outside staterooms. More than 57% of the Penthouses and staterooms feature large, private verandahs.

All staterooms were completely redesigned in a past renovation with new bathrooms, updated color schemes, upholstery and furnishings. During the most recent dry dock in 2014, staterooms and guest corridors on four decks received new carpeting. Each stateroom boasts a 20" LCD flatscreen television and beautiful Murano glass bedside lamps.

Penthouse Deck 10

Penthouse Deck 10 offers eighteen 491-square-foot Penthouse Suites and forty-four 367-square-foot Penthouses. Crystal Symphony also features two Crystal Penthouses which are approximately 982 square feet, and are among the largest, most elegantly appointed and comfortable penthouses afloat.

New verandah furniture has now been installed in all Deck 10 Penthouses. The Crystal Penthouses also feature an oversized bathroom, an elegant dining area and a powder room with an all-crystal pedestal sink, while all Penthouse accommodations include flat-screen televisions, CD and DVD capabilities.

Throughout the ship guests will notice new digital signs that display important daily programming and other information throughout the cruise. The flat-screen monitors are located just outside of Galaxy Lounge and Hollywood Theatre, as well as in the Crystal Dining Room and in the Crystal Plaza.

PERSONALITY PROFILE

World Affairs Lecturer Bob Smolik

Bob Smolik, a veteran diplomat, represented the United States at embassies



throughout Europe and at international organizations such as the United Nations, NATO, and the Organization for Economic Co-operation and Development.

As political advisor to U.S. military commanders in Europe and Africa, he worked in conflict mediation. As an economic diplomat, he has helped to open foreign markets to U.S. investors and traders on a fair and equal basis.

During academic years 2005-2007 he was faculty member at the University of Michigan, Ann Arbor and faculty fellow at Telluride House.

As an international lecturer on anti-corruption and good governance, he has worked in more than 30 countries throughout Latin America, Africa, and Europe. He engages audiences with passion and expertise, offering a look "behind the scenes" at how foreign cultures view the world.

Bob holds graduate degrees from Berkeley and Harvard, an undergraduate degree from Cornell, and he is fluent in five Romance languages.

Mr. Smolik presents the first of his talks at 1:30pm in the Starlite Club.

PERSONALITY PROFILES

Rocket Man Elio Pace

Singer/songwriter and piano-player Elio Pace has thrilled audiences around the world for over twenty years with his soulful voice and amazing piano playing. With his



unique blend of pop, rhythm & blues, jazz and rock 'n' roll, Elio's songwriting has captured the attention and the hearts of music lovers worldwide.

His journey has been littered with magical moments and along the way he has performed with a wonderful array of stars from Queen's Brian May, Huey Lewis, Katie Melua, Craig David, Albert Lee, Debbie Reynolds, Don McLean, Glen Campbell, Gilbert O'Sullivan, Raul Malo and Martha Reeves to name but a few. He has even played for

Hollywood actress Sandra Bullock at her thirtieth birthday party, at which she got up and sung a duet with him.

He appeared live-on-air to millions as the featured artist on BBC Radio 2's 'Weekend Wogan' throughout 2010. This wonderful programme helped firmly place him in the hearts and minds of the station's listeners, who heard Elio display his skills as a singer, songwriter, piano-player, musical director and arranger. As well as appearing with countless guest artists, Elio performed a record 102 solos, many of which were written by him while others were choice covers by his musical heros such as Billy Joel, Stevie Wonder, Elvis Presley, ABBA and Elton John.

Elio is one of those rare artists that appeals to all generations. His recent appearance on BBC's flagship hit children's show 'ZingZillas' as "the greatest Boogie Woogie player in the land" turned him into a household name... well at least to every CBeebies-loving under five year-old and their parents! From Elstree Studios to the Queen Elizabeth Hall, Radio 2's 'Elvis Forever' to 'Proms In The Park' and to his second home, the BBC Radio Theatre, Elio thrills wherever he performs.

Elio Pace performs tonight in *Rocket Man* at 8:45pm and 10:30pm in the Galaxy Lounge.

Phone Home...

Avoid high roaming charges on your cell phone



\$2.50 USD per minute*

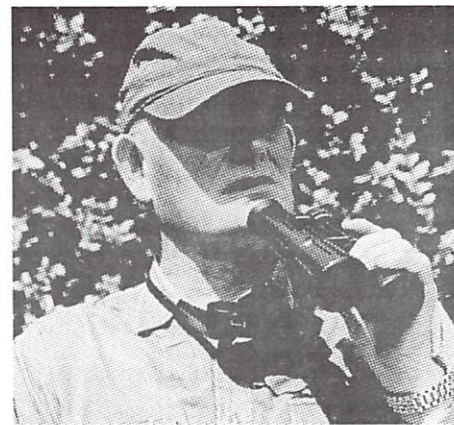
*\$2.50 per minute rate applies to calls made using your in-stateroom phone and billed to your shipboard account.

New rates: \$2.50 USD per minute*

This new rate is in effect when you make ship-to-shore calls using your stateroom telephone that are billed to your shipboard account. The rate is in effect when calling any country in the world.

Refer to the Telephone Guide of your in-stateroom directory for complete instructions on using your telephone.

Special Interest Lecturer Ian Rumley-Dawson



Ian Rumley-Dawson is a wildlife photographer, sound recordist, lecturer and course leader who has travelled throughout Britain, Europe and other more remote regions of the world, to study animals in the wild, such as Arctic Canada, Svalbard, Rocky Mountains, U.S.A., rainforests of the Caribbean, Seychelle Islands, Aldabra atoll, Kamchatka Eastern Russia, Patagonia, Tierra del Fuego, islands of the North and South Pacific, as well as seabird colonies in the Southern Ocean, including the Falklands, Macquarie, New Zealand and Antarctica.

He has written articles for magazines and photographs for wildlife books and tutored wildlife courses for education authorities in Southern England. He has been a Director of the Sussex Wildlife Trust, Chairman of the Friends of Rye Harbour Nature Reserve and Management Committee of that Reserve and Leader of the local Royal Society for the Protection of Birds Group. He also lectures on cruise ships around the world.

Mr. Rumley-Dawson presents the first of his talks at 3:30pm in the Starlite Club.



PERSONALITY PROFILES

Bridge Instructor RoseAnne Levinson

RoseAnne and her family have been involved with bridge for as long as she can remember. For the past 40 years, she and her mother have owned and operated a bridge studio with five duplicate bridge games per week. And, as a matter of fact, she and her husband, Jerry, were introduced by one of her mother's bridge pupils!



Although always involved with the studio, she concurrently pursued a part time career as a dental hygienist, and later, enjoyed a successful career in sales and marketing in the dental field. She began as the first dental consultant for a publicly traded medical company, which had just developed a breakthrough dental product. She lectured nationally to dentists and hygienists and was featured in video and print media. She then became involved with trade show sales and management. Eventually, she was hired by PlaytexProducts, Inc. to be the Professional Program Director, Oral Care Sales, for its consumer products division. There, she was responsible for a national outreach program with Wal-Mart and state dental associations. Her last position, before becoming a full time bridge professional, was to create her own tradeshow placement agency, aptly called, "Peoplepersons." The company's mission was to train and place local dental hygienists as product specialists at various tradeshow venues, thereby eliminating the vendor's considerable housing and travel expenses for their regular permanent staff.

RoseAnne, a Life Master, is an accredited ACBL bridge teacher, a member of the American Bridge Teacher's Association, and has been a certified duplicate bridge director for more than 35 years. She has served as a bridge director and teacher in the cruise industry for 30 years. RoseAnne has won numerous events at sectional, regional and national tournaments. She works with Audrey Grant and is a member of Audrey Grant's Better Bridge Festival Team. She has mentored other teachers and has conducted her own bridge festivals around the country. When she is not sailing, she still runs duplicate games at her bridge club, teaches at a local Community College and gives private and group lessons.

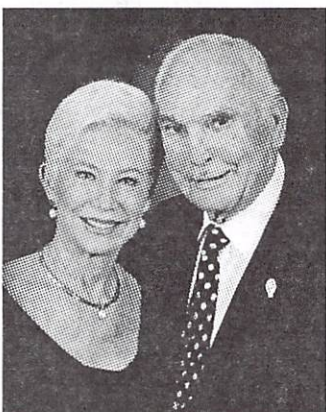
She makes learning fun with her engaging style and lighthearted humor. She is very excited that this is her 16th year with Crystal Cruises. She is thrilled to see so many friends from previous Symphony cruises and looks forward to making new ones on this voyage.

Her husband Jerry, also a duplicate director, is assisting with the bridge program on this cruise. They reside in the coastal town of Marblehead, MA. They have four children and eight fabulous grandchildren!!!

THE PHOTO SHOP

Formal Portraits

A Rare Opportunity...



It isn't every day that we dress up so elegantly—that is part of what makes this evening so special. Make the memory of this spectacular evening last by having a formal portrait taken by the ship's photographers. Portraits are not only a wonderful way to remember your cruise, but they make superb gifts for loved ones at home.

Photographers are available outside the Crystal Dining Room, before and after the dinner seatings.

Ship's Official Time

Crystal Symphony's official time can always be found on stateroom TV Channel 52. Should there be time changes during this cruise, please be cautious about adjusting your personal phone and other electronic devices as some automatically adjust to local time, while others do not. To be safe, always rely on Crystal Symphony's Official Time (TV Channel 52) and request a wake-up call via your stateroom telephone.

For Your Health

In order to maintain our high level of sanitary conditions and in accordance with Crystal Cruises' health regulations, all guests are reminded to wash their hands often and especially before meals. Hand-sanitizers are available at all dining locations throughout the ship.

PERSONALITY PROFILE

Crystal Symphony's Master Captain Mark Symonds

Crystal Cruises is pleased to welcome Captain Mark Symonds to our Crystal Family. With a stellar 27-year career in both passenger and cargo shipping, Captain Symonds



brings a wealth of maritime experience to his new position as Master of Crystal Symphony.

Growing up in England and following graduation from St. Mary's College Southampton, a love of the sea inspired a young Mark Symonds to pursue a cadetship with Mobil Shipping Company, Ltd., where he was quickly promoted to the position of Second Officer.

In the early 1990s, his expertise and desire to travel to the exotic corners of the world landed him a post as Deck Officer for a major cruise line. Over the course of nearly two decades, he steadily rose through the ranks with promotions

to Safety Officer in 1997, Staff Captain in 2002, and ultimately assuming the position of Captain in 2008. During that time, Captain Symonds worked aboard a range of ships, from small, intimate luxury vessels to the mega-ships, managing crews of 400 to more than one thousand. His commands have taken him throughout Europe, the Mediterranean, Asia, Australia/New Zealand, the South Pacific, Caribbean and the Americas, including Alaska. He also oversaw the construction of two newbuilds.

A perfectionist with high standards of excellence, Captain Symonds is also known for his personable and open management style, creating a welcoming yet exacting atmosphere with his crew on board. His commitment to safety has been a mainstay in every one of his maritime positions, and he is highly regarded for staying ahead of all the latest nautical innovations and international maritime standards.

Prior to joining Crystal Cruises, Captain Symonds served as Master with a UK-based travel company aboard smaller ships accommodating 600 people. His experience with the smaller vessels provided him with an appreciation of the opportunity to truly connect with his guests on board, something he was not always able to do on the mega-ships he commanded, and something he regards as a special privilege of his job as Master. For Captain Symonds, his arrival at Crystal is the pinnacle of his career, exploring the world aboard luxurious mid-sized ships celebrated as the World's Best, with guests who share his same sense of adventure and discovery.

Safety at Sea

Crystal Cruises is proud of its excellent safety record, and we do our utmost to improve on our safety procedures and emergency drills. Your safety during your cruise vacation with us is our primary concern.

While Crystal Symphony is manned by well-trained fire fighters and is built to the highest level of fire protection, fire at sea is a serious concern. Please be advised that any use of unauthorized heating elements such as clothing irons or electrical heating coils used in cups or mugs and any open flame such as candles is not permitted in your stateroom. Please note that smoking of any kind is prohibited in Penthouses, staterooms and on the verandahs. Should you smoke, all cigarettes and cigars must be fully extinguished before being disposed of. Please use only ashtrays or other receptacles intended for this purpose to dispose of all smoking materials. Never leave smoking materials unattended.

To protect the environment, we also request that you never throw anything overboard from the ship's open decks or your balcony. Please do not leave towels or other personal belongings on the veranda when you are not in your stateroom.

Thank you for your kind attention.

Captain Mark Symonds and the Crystal Family wish a...

Happy Birthday to:

Mrs. Carol Froehlich
Mr. Richard Dempsey
Mr. Ervin Burkholder
Mr. Michael Adams
Mr. Bob Simons

Happy Anniversary to:

Mrs. & Mr. Kristine Belle Isle & Robert Vinet
Best Wishes and Congratulations!



Creative Learning Institute

Creative Learning Institute Class Open House & Registration

Join us today from **9:00pm to 9:45pm in the Bridge Lounge, Tiffany Deck 6.** Meet the instructors for this cruise and hear about the course offerings.

Crystal's series of hands-on classes featured on this cruise include:

• Business & Technology

Computer University@Sea: Our popular program of hands-on classes uses state-of-the-art computers. Choose among a curriculum of computer-related topics ranging from Microsoft Office basics to advanced photo finishing, plus e-mail and Internet instruction. Private lessons are also available.

(Registration required – sign up at Computer University@Sea, Tiffany Deck 6 Aft)

• Arts & Entertainment

University of Southern California Filmmaking Made Fun: iMovie for the iPad

Course Requirements: Your own iPad 2 or newer generation, upgraded to iOS8 and with the current version of iMovie app pre-loaded. Due to the hands-on nature of this unique program, *class size is limited.* *(Registration required – sign up in the Library, Tiffany Deck 6 Midship)*

Odyssey Art at Sea Program. This cruise we offer **watercolor and knitting classes.**

All levels of artistic ability encouraged and welcomed; no experience necessary.

Masterpiece Classes where a particular medium is studied in greater depth are held when there are 8 or more sea days on a cruise.

(Registration required for knitting – sign up in the Library.) Check your daily Reflections for meeting time and location for knitting and watercolor classes.

Bridge Class: Beginners and Intermediate classes as well as Duplicate & Social Bridge play are offered on sea days and some port days *(No registration required.)*

• Wellness

Crystal's TaylorMade® Golf Program: Using TaylorMade equipment, clinics are offered on golf basics, adverse conditions, bunker play, practice methods, putting and chipping, slicing & hooking, swing analysis and rules review. *(No registration required.)*

Fitness Classes: As always, Crystal offers a full schedule of fitness classes, such as Stretch & Indoor Cycling. *(No registration required. Indoor Cycling is first come, first served.)*

Nordic Walking Program: Join the Fitness Director at 7:30am or 4:30pm on the Promenade Deck 7 Aft; *participation is limited; prior registration in the Fitness Center necessary.*

Walk On Water: Crystal Cruises' exclusive Walk-on-Water program features The WALKVEST® Training System which revolutionizes walking simply by adding resistance (added weight) to your walk *(No registration required)*

Crystal Visions Enrichment Program

Crystal Cruises' unique enrichment programs always include at least two expert speakers to enhance our guests' enjoyment and education on board. A prominent historian, anthropologist or similar expert on the itinerary area is always on hand to share expertise and fascinating information about the ports or global areas visited on the cruise. In addition, another renowned expert in a specific field of interest offers talks to increase guests' awareness of the wonderful world around them.

Our award-winning enrichment program also always includes instruction in Bridge, dancing and computers, and on selected sailings, experts are also invited to share their knowledge in the fields of golf, arts and crafts, knitting, yoga, health and fitness, the culinary arts, wine tasting, music, opera, the fine arts, literature and the performing arts.

Daily *Reflections* gives complete schedules and biographical information about our excellent Crystal Visions enrichment speakers and instructors.

A Note about Sun Loungers & Chairs

For the comfort and convenience of all our guests we would like to remind everyone that reserving or saving sun loungers, chairs or sofas for later usage on our pool deck or any other public lounge area is not permitted. Any chairs, loungers or sofas unattended for more than 30 minutes will be considered vacant and will be reset for new guests. Any items left behind can be retrieved from the Reception Desk on deck 5 midship. Thank you for your understanding.



\$20 Casino Slot Tournament

Today at 2:00pm

Registration from 10:00am until 1:45pm.
Minimum 8 players; maximum 40 players
Rounds to be played are determined by the number of entrants.

PERSONALITY PROFILES

Destination Lecturer Dr. Jay Wolff



Dr. Jay Wolff is an internationally known and acclaimed lecturer who travels the world, presenting in-depth lectures about the people and events that have shaped

today's world and are influencing the world we'll be living in tomorrow. He takes the facts of history and the legends and folkways of civilizations and weaves them into stories of the world. He has covered entire world cruises for Crystal Cruises, lecturing throughout the full journey.

Dr. Jay Wolff took his undergraduate and doctoral degrees at Georgetown University in Washington DC. A former member of the faculty of Florida Gulf Coast University's Renaissance Academy and elected a member of the British Royal Society of Health, he has published more than a hundred articles on history and culture and healthcare in professional journals as well as *American Heritage*, *Forbes*, *American Legacy*, *The Washington Post* and the *Los Angeles Times* and has been a commentator on The History Channel.

Dr. Jay began researching and writing his published articles while practicing his first profession, dentistry. After retiring from dentistry, history research and writing became his full-time work.

When not at sea, Dr. Jay and his wife Carol are home in Naples, Florida. Dr. Jay makes frequent guest-speaker appearances throughout America. His remarkable ability to deliver each full lecture without the use of notes or written references delights audiences because there are no distractions to the riveting story-telling quality of Dr. Jay's lectures. His entire collection of over 120 lectures, recorded on CD albums is available in the Apropos shop, where you will also find descriptive lists of titles.

Dr. Jay lectures today at 10:00am in the Galaxy Lounge.

Booking Your Next Crystal Cruise in Three Easy Steps

Remember you do not have to wait in line to start your next cruise booking.



1. Simply fill out the easy-to-complete Onboard Booking Form available not only in the Cruise Atlas in your stateroom but also at the Cruise Sales Consultant's Desk in the Crystal Plaza, **(with your name, stateroom preference and dining preference).**

2. Kindly turn in your completed form to the Reception Desk or to the Cruise Sales Consultant's Desk.

3. Your booking request will be confirmed at home by your Travel Agent, who receives full credit when you start your booking here on board.

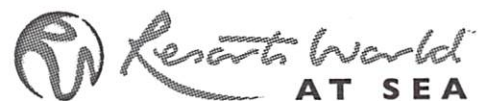
We look forward to sailing with you on a future Crystal cruise!

Booking on board is fast, easy and secures your Onboard Booking savings.



Join us for Bingo

Today in the Starlite Club:
10:50am Bingo cards on sale
(Bingo starts at 11:05am)
Hosted by
Resorts World at Sea Casino





Daytime Activities

Good Morning

6:00am – 12 Noon	"The Morning Show" with your hosts Cruise Director Shane Morley and Julie Bell from the Crystal Ensemble. <i>Repeats continuously.</i>	TV Channel 27	
7:30am *	Morning Walk on Water & Nordic Walking Program with the Fitness Director.	Promenade Deck Aft	7
8:00am *	Fitness Class: Stretch with the Fitness Director.	Starlite Club	6
8:30am	Catholic Mass is celebrated by Father Alfred Hernandez.	Hollywood Theatre	6
8:30am *	Fitness Class: Circuit Training with the Fitness Director.	Fitness Center	12
8:30am – 12 Noon & 1:30pm – 6:00pm	The Library Is Open. Check out books, DVDs & CDs for your enjoyment during the cruise. Sign up for indoor games like chess, Scrabble, Mah Jongg, etc.	Library	6
9:00am *	Creative Learning Institute Class Open House and Registration. Meet the University of Southern California Filmmaking Instructor, Golf Teaching Professional, and Odyssey Art at Sea instructors. Hear about the course offerings & sign up, as the Nordic Walking and University of Southern California Filmmaking Classes have participation limits.	Bridge Lounge	6
9:30am	Arthritis Pain Solutions. Discover with our Acupuncturist, Marissa Byrum, how acupuncture is a viable option to address arthritis pain.	Avenue Saloon	6
10:00am – 2:00am	Resorts World at Sea Casino: Slots are open! Try your luck in the Casino!	Casino	6
10:00am	Complimentary Fitness Seminar: Detox for Health, Energy and Weight Loss with the Fitness Directors. Do you want to feel younger and full of energy? Learn the secrets of detoxification on the path to attain the body you've always wanted. It all begins with one simple step.	Starlite Club	6
10:00am *	CU@Sea Lecture: iPad – Just the Basics with instructors Judy Koehler & Michael Newell. (No pre-registration necessary).	Hollywood Theatre	6
10:00am – 10:45am *	Beginners Bridge Lesson with Instructors RoseAnne and Jerry Levinson. At this time, the Bridge Lounge is reserved for lessons only. Thank you.	Bridge Lounge	6
10:00am	Crystal Visions Enrichment Program. Destination Lecturer Dr. Jay Wolff presents "Darwin and Evolution" Charles Darwin, trained to be a parson, rocked the world with his theory of evolution. His key revelation came to him from observations of specimens he collected in the Galapagos Islands. The controversy he created lives on today. <i>(Broadcast live on TV Ch. 29; Rebroadcast on TV Ch. 28: 12 Noon to 12 Midnight)</i>	Galaxy Lounge	6
10:15am *	TaylorMade® Golf Clinic with PGA Golf Teaching Professional Joe Herbert. "The Basics." Grip, Stance, Posture & Alignment (Inclement weather: Deck 12 landing.)	Golf Nets	12
10:30am	Complimentary Spa Seminar: Ladies Pamper Party. Join the fun and learn the tricks of the beauty trade. Includes complimentary eye treatment.	Crystal Spa	12
10:50am	BINGO hosted by the Resorts World at Sea Casino. Please note that the daytime dress code is appropriate attire for Bingo; no robes. (Game starts at 11:05am).	Starlite Club	6
11:00am – 11:30am	Needlepoint Class with Activities Hostess Urara. Select a kit to work on during the cruise. Kindly be present to receive one kit per person. Beginners Class takes place January 31 and February 2.	Lido Café Stbd	11
11:00am	Complimentary Medi-Spa Seminar: Non-Surgical Facelift with Dr. Dusan Dincic.	Avenue Saloon	6
11:00am	Table Tennis Open-Play with the Fitness Director.	Horizon Deck Aft	8
11:00am *	Odyssey Art at Sea: Knitting Class. Join a social, warm and friendly knitting group, hosted by Pat Kronick, experienced knitter. All levels welcome; individual help is given. Pre-register in the Library. Kits also available for sale.	Palm Court	11
11:00am *	University of Southern California Digital Filmmaking Course iMovie for the iPad. "How to Shoot Better Video, Using Your iPhone" with Instructor Ben Wilmore. Pre-registration in Library & your own iPad with iMovie pre-loaded required).	Hollywood Theatre	6
11:00am – 11:45am *	Intermediate Bridge Lesson with RoseAnne and Jerry Levinson. At this time, the Bridge Lounge is reserved for lessons only. Thank you.	Bridge Lounge	6
11:30am – 12:30pm	Gordon Porth plays the Crystal Piano for your listening and cocktail pleasure.	Crystal Cove	5

Good Afternoon

12 Noon	Captain's Update. The latest weather and navigation information.	PA System & Ch. 52	
12:05pm	Team Trivia hosted by Roman from the Crystal Ensemble. Today's prizes are vouchers for the Photo Shop, Casino, Crystal Spa & Salon and the Avenue of the Stars Boutiques.	Starlite Club	6
12:05pm – 1:00pm	Resorts World At Sea Casino: Free Gaming Lessons. Get all the tips from our experts.	Casino	6

* Indicates Creative Learning Institute Activity

Good Afternoon, *Continued...*

1:00pm – 2:00pm	Poolside Music with the Crystal Sextet. <i>Weather permitting.</i>	Seahorse Pool	11
1:00pm – 6:00pm	Resorts World At Sea Casino: Table Games are open! Try your luck in the Casino!	Casino	6
1:30pm	Crystal Visions Enrichment Program. World Affairs Lecturer Bob Smolik presents "The Real Driver of Globalization" The Humble Shipping Container – Shrinking the World One Box at a Time. <i>(Broadcast live on TV Ch. 29; Rebroadcast on TV Ch. 29: 4:30pm to 12 Midnight)</i>	Starlite Club	6
2:00pm	Complimentary Fitness Seminar: Relieving Back Pain and Improving Posture. Do you suffer from ankle and knee pain, neck or shoulder pain, disc problems, sciatica, bunions, hammer toes? Find out how to walk in alignment with our Fitness Directors.	Fitness Center	12
2:00pm	Resorts World At Sea Casino: \$20 Slot Tournament. Register from 10:00am until 1:45pm.	Casino	6
2:00pm	Complimentary Hair Care Seminar. Discover the perfect cut, color, style and treatments for you! Great for those attending Black Tie Optional night.	Crystal Spa	12
2:15pm – 4:15pm	Duplicate and Social Bridge with Instructors RoseAnne and Jerry Levinson. At this time, the Bridge Lounge is reserved for bridge games only. Thank you.	Bridge Lounge	6
2:15pm *	CU@Sea Class: Applying Basic Image Edits Using Photo Shop Elements 14 with Instructors Judy Koehler & Michael Newell. <i>(Space is limited; pre-registration required)</i>	The Studio	6
2:30pm	Movie: The Imitation Game. During World War II, mathematician Alan Turing tries to crack the enigma code with help from fellow mathematicians. Stars: Benedict Cumberbatch, Keira Knightley, Matthew Goode. Rated PG-13; 1:54.	Hollywood Theatre	6
2:30pm	Complimentary Dance Class: Salsa with Instructors Paul & Anna and the Ambassador Hosts. <i>(No partner required).</i>	Starlite Club	6
2:30pm – 3:00pm	Needlepoint Class (repeat) with Activities Hostess Urara. Select a kit to work on during the cruise. Kindly be present to receive one kit per person. Beginners Class takes place January 31 and February 2.	Lido Café Stbd	11
3:00pm *	Odyssey Art at Sea with Instructor Pamela Tucker. "A South American Color Buzz" Using vision pens and watercolor, have fun making paintings based on the vivid colors of South American neighborhoods. You may also paint a subject of your own choosing.	Lido Café, Portside	11
3:00pm	Complimentary Medi-Spa Seminar: Reverse Facial & Neck Aging with Dr. Dusan Dincic.	Crystal Spa	12
3:00pm	Gym Orientation (30-min). Meet the Fitness Director and discover our new TechnoGym fitness equipment. Please meet at 3:00pm in the...	Fitness Center	12
3:15pm *	TaylorMade® Golf Clinic with PGA Golf Teaching Professional Joe Herbert. "Alignment." (Inclement weather: Deck 12 landing.)	Golf Nets	12
3:30pm	Crystal Visions Enrichment Program. Special Interest Lecturer Ian Rumley-Dawson presents "Wildlife Introduction." The continent of Antarctica is larger than the whole of Europe and about one and a half times the size of the USA; yet few people visit this great white continent, which contains huge numbers of animals that return each year to breed along the coastal edges. <i>(Broadcast live on TV Ch. 29; Rebroadcast on TV Ch. 33: 5:00pm to 12 Midnight)</i>	Starlite Club	6
3:30pm *	CU@Sea Class: Applying Basic Image Edits Using Photo Shop Elements 14 (Repeat) with Instructors Judy Koehler & Michael Newell. <i>(Space is limited; pre-registration required)</i>	The Studio	6
3:30pm *	Paddle Tennis Open-Play with the Fitness Director. <i>(Weather permitting).</i>	Wimbledon Court	12
3:30pm – 4:30pm	Crystal Afternoon Tea Time with music by the Ruby Bamboo Duo.	Palm Court	11
4:00pm	Complimentary Acupuncture Seminar: Weight Loss & Acupuncture. Find out how Traditional Chinese Medicine can assist your efforts to lose weight and feel great. Meet Marissa Byrum and discover how Acupuncture may change your life.	Crystal Spa	12
4:00pm *	Fitness Class: Stretch with the Fitness Director.	Fitness Center	12
4:30pm *	Afternoon Walk on Water & Nordic Walking Program with the Fitness Director.	Promenade Deck Aft	7
4:30pm	Friends of Bill W. meet in...	Lido Café, Port Aft	12
4:45pm *	Odyssey Art at Sea: Knitting Class. Join a social, warm and friendly knitting group, hosted by Pat Kronick, experienced knitter. All levels welcome; individual help is given. Pre-register in the Library. Kits also available for sale.	Lido Café	11
5:00pm	Complimentary Footprint and Postural Analysis with our Fitness Director.	Fitness Center	12
5:00pm	Good Evening, Crystal LIVE! Comedy clips hosted by Cruise Director Shane Morley. Live call in TV Trivia at approx. 5:00pm.	TV Channel 27	
5:15pm	Sabbath Eve Service conducted by fellow guests. If you are interested in conducting this service, please contact the Cruise Director through the Reception Desk.	Hollywood Theatre	6
8:00pm – 2:00am	Resorts World at Sea Casino: Table Games are open! Try your luck in the Casino!	Casino	6



PERSONALITY PROFILES



Odyssey Art at Sea Instructor Pamela Tucker

Pamela Tucker was born in Frankfurt, Germany. She was raised in Pago Pago, American Samoa and Kalamazoo, Michigan, but has lived in the New York region for the last 30 years. She has studied both art history and painting at the National Academy of Design, the Harlem Studio of Art, and Grand Central Art Academy in New York City.



Pam is an award winning artist whose representational paintings include both the figure and landscape as her subject. She also is an arts educator and teaches painting to adult groups on a regular basis. She currently is the Director of Art Programming at the New Dawn Foundation in New Rochelle, NY.

Dawn Foundation in New Rochelle, NY.

Pam loves to meet new people and looks forward to sharing her talent and enthusiasm. Everyone is welcome to join the classes. The activities will focus on having fun, learning new techniques, and creating pieces inspired both by our wonderful cruise destinations as well as by our imagination.

Expanded Knitting Program with Odyssey Art at Sea

As you leisurely stroll around the ship, you may notice some of your fellow guests enthusiastically knitting away on colorful scarf or a charming hat. You, too, can be happily engaged in such enjoyable projects to take home as souvenirs or give to others as gifts thanks to our expanded knitting program through Odyssey Art at Sea.

With an expert in knitting as your host and instructor, everyone from those who have never knitted before to experienced knitters will benefit from and enjoy this wonderful program on board our ships. Linda Perlmutter, founder of Odyssey Art at Sea, has partnered with Berta Karapetyan, CEO of Karabella Yarn Company, to develop complete kits that use the finest Italian yarns. Berta has designed these special kits and projects, many of which can actually be completed during the course of the cruise.

Guests may purchase complete knitting kits on board through Odyssey Art at Sea and learn how to make exquisite and creative projects as elaborate as baby sweaters or as simple as scarves. Guests are also encouraged to bring their own projects to work on and join the knitting groups.

Check our daily *Reflections* for meeting times in the Palm Court and join in the fun and camaraderie. Whether you are new to knitting and starting on your first project, or an experienced knitter who wants to fine tune your skills, all ages and levels are invited to participate!

USC Digital Filmmaking Instructor Ben Willmore

Ben Willmore's passion for photography has brought him to all 50 states in the USA and six continents around the world.



He is a world-renowned digital imaging expert, who has authored over a dozen books on the topic and has

been inducted into the Photoshop Hall of Fame. He has personally taught well over 100,000 people and is often a standing-room-only speaker at design and photography conferences throughout the world. Ben writes for numerous digital imaging publications including *Photoshop User* magazine. He has a talent for describing overly technical concepts by relating them to things you already use on a daily basis and therefore makes them feel intuitive and easy to use.

He and his wife Karen live full-time on a 40' motorcoach, traveling the United States in search of unique and interesting subjects to photograph. To learn more about Ben and see examples of his photography, visit www.DigitalMastery.com.

PERSONALITY PROFILE

PGA Golf Teaching Professional

Joe Herbert

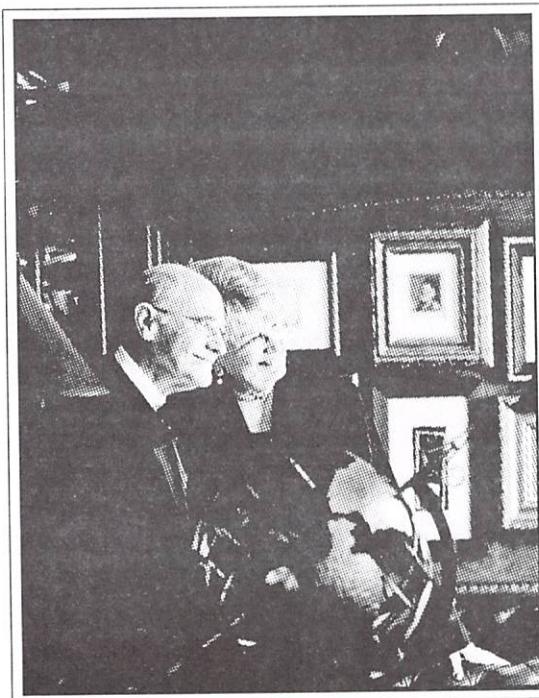


Joe's love of golf began at the early age of five. In high school, he attained medal-list honors and received a full golf scholarship to college. After being on the tour for a year, it was his preference to become a PGA head golf professional.

Joe worked as an assistant golf professional at Hyperion Field Club in Des Moines, Iowa and Columbine Country Club in Littleton, Colorado. He then became head golf professional at Glenmoor Country Club in Englewood, Colorado. During those years, Joe was awarded "Best 100 Golf Shops in America" for two consecutive years, and "Merchandiser of the Year," and "Golf Professional of the Year" for Country Clubs of America. He was also nominated "PGA Teacher of the Year" and "Jr. Golf Leader" for the Colorado section PGA. Joe was also the head golf coach for the Colorado School of Mines in Golden, Colorado. Since then, Joe has pursued taking positions on a selective basis.

Joe is currently a PGA Teaching Director at Arrowhead Golf Club Littleton, Colorado, one of *Golf Digest's* Top 100 Golf Courses in America. Joe has recently been nominated as the 2016 PGA Teaching Profession of the year. In 2009 & 2010, Joe was awarded the prestigious P.G.A. Presidents Council Award for Outstanding Golf Instructor of Developing Golf Instruction Programs. Joe's story has been featured in some publications and magazines such as *Boomer Golf News* and in June 2010, *Style* magazine featured a complete story of Joe's teaching piece — *Golf on a Cruise*. He also released his DVD – *Fundamentals of Golf*, due to the many requests of the students he has taught through the years. Due to overwhelming requests, he is currently developing golf teaching apps due out in the spring of 2016. Joe's experience and accomplishments in teaching have led him to various positions and challenges. One of the most rewarding has been helping Crystal Cruises' guests with golf. Joe looks forward to your attendance at his group seminars or on an individual basis. Joe's DVD's can be purchased at our onboard gift boutique Apropos, Tiffany Deck 6.

THE PHOTO SHOP



THE Master COLLECTION



Featured on this voyage: Kevin Wilson FBIPP FMPA



Kevin has the rare distinction of being a Fellow in all three major photography organizations in the UK - The British Institute of Professional Photography (BIPP), The Master Photographers Association (MPA), and the Royal Photographic Society (RPS). Uniquely he attained his Fellowship in three separate photographic disciplines - Portraiture, Wedding, & Documentary with the BIPP.

- Available for appointments on this cruise
- Capture the moments of your special occasion
- Selected images presented in a hand-crafted, custom-bound album
- Appointment availability extremely limited; consult the Photo Shop for your exclusive portrait session
- Check Reflections for Photo Shop hours





Newspaper Delivery Service and PressReader e-Newspapers

With the PressReader digital service, numerous global newspapers can be downloaded to your smartphone or tablet. To use this service, guests should have completed the download of the PressReader app prior to embarking on the cruise, or guests may wish to download the app while ashore in a port.

Guests who prefer to read paper copies of the newspapers may do so by completing the order form available in your Penthouse or stateroom. Cost for the Newspaper Delivery Service is \$6.50 per copy and, for your convenience, the fee will be added to your shipboard folio. Please note that delivery times will vary depending on the time of day the forms are received and the time changes as the ship sails from port to port.

A complete listing of titles is available at our Reception Desk. Delivery of paper copies of the newspapers you have selected begins as soon as the ship receives the publications. Virtually every country is represented and the list includes both daily and weekly newspapers from the United Kingdom, United States, Japan, China, India and Russia, among others.

Shipboard Folio Charges

To avoid any potential delays on the day of your disembarkation, please stop by the Reception Desk at any time during your cruise regarding your Shipboard Folio Charges. We will be pleased to assist you. Your Final Shipboard Folio will be delivered to your Penthouse or Stateroom on the morning of disembarkation.

Extra Caution During Rough Seas

Crystal Cruises has our guests' safety in mind at all times. We would like to make our guests aware that we may anticipate inclement weather at times and possible rough seas at short notice.

In the event that we encounter rough seas, guests may wish to take some extra precautions and secure personal items that are breakable or could fall off shelves. Such personal items might include electronic devices (iPads, iPods, e-readers, laptops, etc.) and perfume bottles, among others.

Also, please be reminded to take care and caution when moving about the ship in rough sea as well as when utilizing the bathrooms during the night. Hold on to handrails when walking on steps, stairways or gangways, and be careful when walking on wet decks and when going through exit doors, especially in windy conditions.

THIS VOYAGE ONLY – **HUBERT GEMSTONES** - AVENUE OF THE STARS BOUTIQUES



Hubert MEXICAN FIRE OPAL

The fiery, warm glow of the fire opal beguiles jewel enthusiasts the world over. This radiant orange simply cannot be overlooked! The fire opal, which, like the other opals, consists of silicic acid with a relatively high water content, was named for its color.

Join Hubert and Mark to view our unique and exquisite collection of Mexican Fire Opals.



All of Hubert's designs are
Tax and duty free and
Exempt from US customs charges
Ask in-store for details

Shipboard credits may be applied to all retail purchases.



Crystal Spa & Salon

Today's Onboard Specials

New Year – New You
Weight Loss Boot Camp

Ready to look and feel your best?

Let us help you reach your goals with this ultimate package!

5 Acupuncture Weight-Loss Treatments (created specifically for you!)

3 Ionithermie Treatments (lose up to 8 inches in one treatment and fight fluid!)

2 Personal Training Coaching Sessions with our fitness directors

1 Body Composition Analysis

Package price \$1199**

Normally \$1520 – a savings of \$321

**no other discounts apply to this offer

Shipboard credits may be used on all Spa and Salon Services.

For more information, please call 3875 or visit the Spa on Sun Deck 12 Aft.

For your convenience, an 18% service charge will be automatically added to the price for your services at the time of check-out.

Crystal Cruises' Computer University@Sea

Crystal Cruises is pleased to provide you with satellite Internet access during your cruise. At this time, we would like to provide some guidance and information that, we hope, is helpful to you while using the Internet on board Crystal Symphony.

The only method of providing Internet access while at sea is through satellite communication. Such communication between the ship and earth, via commercial satellite, must travel a distance of over 90,000 miles. Additionally, the satellite dish aboard the ship must have a clear "line-of-sight" to the satellites orbiting earth.

Although Crystal Cruises utilizes state-of-the-art equipment, inherent factors such as the great distances involved, atmospheric conditions, ship's position, and the nearby presence of tall mountain ranges can all greatly affect your online experience.

For these reasons, we ask you to keep the following things in mind when utilizing our Internet services on board:

- Before purchasing any Internet plans, we suggest that you bring your gadgets to CU@Sea for proper configuration. CU@Sea is located on Tiffany Deck 6 Aft.
Our technology concierges are available from 7:00am until 11:00pm. Thank you.
- Internet access is significantly slower than what you would experience on land.
- Although every effort is made to maintain a link 100% of the time, satellite communications may be intermittent.
- Unused minutes are not refundable.
- To provide the best service possible to all of our guests, we filter Internet content.
For this reason, not all websites and services are accessible through Internet service on board. Please contact CU@Sea for further details.
- Due to bandwidth limitations on board, Voice Over IP programs are not supported on board.



PERSONALITY PROFILES



Dance Instructors, Anna Selleck & Paul Zaidman

Anna Selleck was born in a small town named Warrnambool which is located on the surf coast of Victoria, and later she moved to Melbourne to begin her schooling and dance life.



Anna began her love affair with dance when she was only five years old, she studied for ten years and was certain she wanted to be a ballerina.

Anna also trained in the Theatrical side of dance such as Jazz, Tap and Folk dance, which included dances from Italy, Spain and Russia. Anna participated in many competitions and theatrical performances and always took extra classes when the top dancers of the world came to Melbourne.

Anna's interests and curiosity began to shift towards other fields of dance such as Ballroom, Latin and street Latin—attaining high standards in all her examinations and winning dance competitions accompanied by her partner, Paul Zaidman.

Anna hopes to one day inspire children to learn to dance and would like to give them the guidance, love, support and inspiration which she was once given by her teachers and coaches.

Paul Zaidman was born in the USSR in 1970 and was taken to Israel as an infant. In 1980, Paul moved to Australia. Paul began his dancing career as a five year old, he excelled in every discipline of dance and theatre he put his mind to.

When Patrick Swayze filmed the movie "Dirty Dancing", Paul Zaidman found his calling. Paul, then 18 years old, turned to Ballroom, Latin American and the street Latin arts where quickly rose to the highest ranks of the Australian dance sport world, traveling the globe competing in different nations.

Paul has appeared in television productions such as "Strictly Dancing" on the ABC, and the Australian version of "Dancing With The Stars", where his partner was Kimberley Davis.

Paul says the highlight of his career was teaching Kylie Minogue to dance Salsa.

Paul has also run his own dance company in Melbourne for the past 8 years and has worked in the cruise industry on a few different cruise ships but says, "it's always great to come home to Crystal."

SHOPPING ON BOARD – AVENUE OF THE STARS BOUTIQUES, TIFFANY DECK 6 MIDSHIP

You're invited to a TADASHI SHOJI Event

11:00am, Apropos
January 29th

Join us in Apropos and try on pieces from our exclusive collection by renowned fashion designer, Tadashi Shoji. Adored world wide by women including Helen Mirren, Kate Beckinsale, Katy Perry and Octavia Spencer



TADASHI SHOJI

Shipboard credits may be applied to all retail purchases.

Join us for a special TAG HEUER Swiss Time Piece Event

2:30pm, Facets
January 29th

Discover how TAG Heuer has continuously changed the Swiss watchmaking industry for the past 155 years. Visit Mandy & Zara for this event



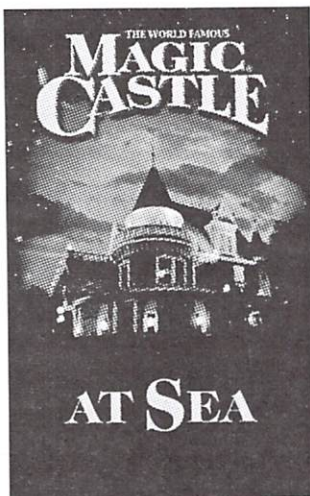
Magic Castle at Sea William Fern



Recently voted "International Champion of Strolling Magic" by the International Brotherhood of Magicians in 2011, Will Fern is a seasoned performer with over 20 years of experience. An expert at both close-up and stage magic, Will travels the world performing at a wide variety of corporate and private affairs. From trade show exhibits and sales meetings to his popular "Team Magic!" team-building programs, Will has created a uniquely dynamic career in magic.

Along with such clients as Novartis, Verizon, Goldman Sachs and Pepsi, Will was chosen as one of only ten "Stars of Magic" by the National Theater in Washington, DC. He has been employed as

the resident magician at several top Caribbean resorts and is also a regularly featured performer at the world-renowned Magic Castle in Hollywood, California. Close-up magic is his passion, and he is sure to astound and delight you in our Magic Castle at Sea program.



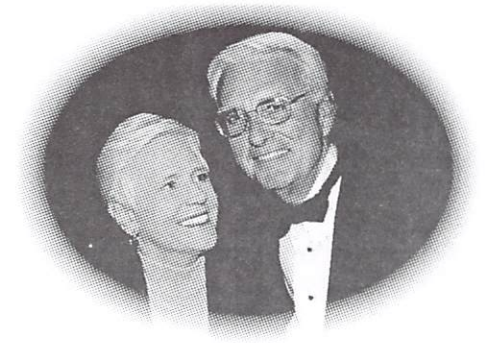
Crystal Cruises and the Magic Castle proudly present Master Magician **William Fern** on the following days:

January 29 3:00pm & 4:00pm
January 31 3:00pm & 4:00pm
February 2 3:00pm & 4:00pm
February 6 3:00pm & 4:00pm
February 8 3:00pm & 4:00pm
February 10 3:00pm & 4:00pm

These exclusive performances in Avenue Saloon are limited to only 20 guests per show. Please collect your ticket from the Library during opening hours. Running time of the show is approximately

25 minutes. Tickets are first come, first served. Limited to one ticket per guest, please. (Minimum Age 18 years).

CU@Sea Instructors Judy Koehler-Newell & Michael Newell



Judy Koehler-Newell and Mike Newell have been CU@Sea instructors with Crystal Cruises since 2000.

Judy was raised in Hobbs, Indiana, earned a business degree from Indiana University in 1968, and retired as a senior manager after 30 years with IBM.

Mike grew up in Miami Florida, and after graduating from Georgia Tech, worked in various senior management positions in sales and marketing with IBM and EMC. Upon relocating to Vero Beach, Florida in 1995 Judy and Mike have served as board members with numerous not-for-profit organizations. Judy has been especially active with the Humane Society of Vero Beach.

In 1996 they created and directed the activities of the Vero Beach SeniorNet Learning Center, teaching 9,000 older adults numerous courses in the use of personal computers and digital media. Their center annually ranked as one of the top 10 in the SeniorNet network of centers.



Evening Entertainment Choices

Black Tie Optional: A Black Tie Optional evening offers our guests a celebratory opportunity to dress more formally.
Women's Black Tie Optional includes: A Formal cocktail dress, Evening gown or Dressy evening separates;
Men's Black Tie Optional includes: Dark suit with or without a tie or a Tuxedo

Starlite Club

Tiffany Deck 6, Midship

The **Crystal Sextet** plays for your dancing and listening pleasure. Join the Ambassador Hosts. Enjoy Traditional Ballroom Dancing: 5:15pm – 6:00pm

7:45pm – 8:30pm • Captain's Reception

Captain **Mark Symonds** is very pleased to greet all of you, however, he and the other staff receiving you refrain from shaking hands in order to provide the most effective preventative sanitary measures.

The **Crystal Sextet** plays for your dancing and listening pleasure. Join the Ambassador hosts for:

Traditional Ballroom Dancing: 9:30pm – 11:30pm
Contemporary Listening & Dancing Music: 11:30pm – 12:30am
A great mix of popular music (recorded): 12:30am – Late

Hollywood Theatre

Tiffany Deck 6, Forward

8:15pm and 10:30pm

Movie: *Sicario*

An idealistic FBI agent is enlisted by a government task force to aid in the escalating war against drugs at the border area between the U.S. and Mexico.

Stars: Emily Blunt, Josh Brolin, Benicio Del Toro

Rated R; 2:02.

Crystal Cove

Crystal Deck 5, Midship

Gordon Porth plays the Crystal piano

5:15pm – 6:15pm,
7:30pm – 8:30pm &
9:30pm – 11:00pm

Palm Court

Lido Deck 11, Forward

Jazz, Easy Listening and more with the **Ruby Bamboo Trio**

6:15pm – 7:15pm,
7:45pm – 8:30pm &
9:30pm – 11:00pm

Avenue Saloon

Tiffany Deck 6, Aft

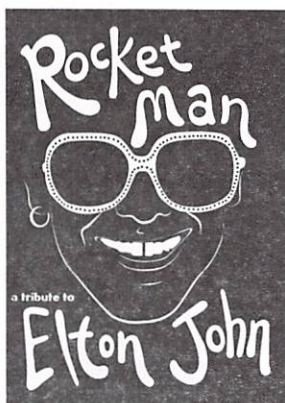
Jeff Deutsch plays cocktail music for your listening pleasure: 8:00pm – 8:30pm

Jeff Deutsch sings & entertains in our Late Night Piano Bar: 9:30pm – 10:00pm & 12 Midnight – 1:00am

10:00pm • **KARAOKE** with **Paul & Anna**

8:45pm and 10:30pm • **Galaxy Lounge**, Tiffany Deck 6 Forward

CONCERT PRODUCTION



Rocket Man: A Tribute to Elton John

Starring **Elio Pace**

Featuring The Crystal Ensemble of Singers and Dancers

Dennis Dubbin and Julie Bell

Craig Blake • Adam Davidson • Iuliia Liukshina

Olga Makarenko • Lina Nevskaja • Jessica Perteroti

Roman Postolatiy • Oleksandr Zaichuk

And **The Galaxy Orchestra** under the direction of **David Price**

Theatrical lighting & special effects, including strobes, smoke, haze & pyrotechnics may be used during this production. As a courtesy to fellow guests, please do not reserve seats. In consideration of your fellow guests & entertainers, please turn off all electronic devices while in the showroom. In order to maximize our guests' enjoyment of this evening's performance & to eliminate any disturbance during the show, no beverage orders will be taken once the performance has commenced.



Friday's Dining Hours

Breakfast

Lido Café, Lido Deck 11 Aft
Early-Bird Coffee (Port Side)
Early-Risers Buffet (Continental)
Breakfast Buffet

Crystal Dining Room, Crystal Deck 5 Midship
Breakfast (Open Seating)

The Bistro, Tiffany Deck 6 Midship
Late-Risers Coffee with Danish Pastries

Trident Grill, Lido Deck 11 Midship
Late-Risers Breakfast

Luncheon

Crystal Dining Room, Crystal Deck 5 Midship
Luncheon (Open seating)

Lido Café, Lido Deck 11 Aft

Luncheon Buffet Featuring Asian Specialities

Trident Grill, Lido Deck 11 Midship
Open for hamburgers, cheeseburgers, wraps and snacks

Ice Cream Bar, Lido Deck 11 Midship

The Bistro, Tiffany Deck 6 Midship
Bistro Snacks, Tarts and Pastries

Palm Court, Lido Deck 11 Forward
Crystal Afternoon Tea Time

Dinner

Crystal Dining Room, Crystal Deck 5 Midship

Dinner (Assigned Seating – Main Seating)

Dinner (Assigned Seating – Late Seating)

Prego, Tiffany Deck 6 Aft (Italian Cuisine)

Silk Road, Tiffany Deck 6 Aft (Asian Cuisine by Nobu Matsuhisa)

The Sushi Bar, Tiffany Deck 6 Aft (Cuisine by Nobu Matsuhisa)

The Bistro, Tiffany Deck 6 Midship

Petit Desserts and Cheeses

Late Night Gourmet Snacks

Avenue Saloon and Starlite Club

Black Tie Optional Night

5:00am – 6:30am

6:30am – 7:30am

7:30am – 10:00am

8:00am – 9:30am

9:00am – 11:30am

10:00am – 11:00am

12 Noon – 1:30pm

12 Noon – 1:30pm

11:30am – 6:00pm

11:30am – 6:00pm

11:30am – 8:00pm

3:30pm – 4:30pm

6:00pm

8:30pm

6:00pm – 10:00pm

6:00pm – 10:00pm

6:00pm – 10:00pm

8:00pm – 11:00pm

11:00pm – 12 Midnight

Avenue of the Stars Boutiques:

Tiffany Deck 6 Midship

Apropos, Crystal Collection and Facets

Open today from 9:30am to 11:00pm.

Resorts World at Sea Casino,

Tiffany Deck 6 Forward

Slots: Open today from 10:00am to 2:00am.

Table Games:

Open today from 1:00pm to 6:00pm and 8:00pm to 2:00am.

Computer University@Sea, Tiffany Deck 6

Open 24 hours. Technology Concierges available from 7:00am to 11:00pm.

Concierge Desk, Crystal Deck 5 Midship

Open daily 7:30am to 7:30pm.

Cruise Sales Consultant, Crystal Deck 5

Paula Jean Pfitzer is at her desk from 9:00am to 12 Noon and 3:30pm to 5:30pm. Start a new cruise booking or river yacht booking while on board and enjoy extra savings! All bookings are then forwarded to your respective Travel Agent.

Crystal Society Hostess, Crystal Deck 5

Isabell Wagner is at her desk from 9:00am to 12 Noon and 3:30pm to 5:30pm.

Crystal Spa & Salon, Sun Deck 12 Aft

Open 8:00am to 8:00pm including the men's and ladies' Sauna and Steam Room; phone 3875. Please note that appointments are available at your request until 10:00pm.

Crystal Spa Fitness Center, Aerobics Studio & Weight Room, Sun Deck 12 Aft

Open 24 hours. Our Fitness Directors are available for personal training sessions and are on duty from 7:00am to 7:00pm.

Library, Tiffany Deck 6 Midship

Open today 8:30am to 12 Noon, 1:30pm to 6:00pm and 7:30pm to 11:00pm. Check out books, DVDs & CDs for your enjoyment during the cruise. Sign up for indoor games like chess, Scrabble, Mah Jongg, etc.

Medical Center, Crystal Deck 5 Forward

Located just forward of Reception Desk on the starboard side. Open 8:00am to 12 Noon and 2:00pm to 6:00pm.

Doctor's Consultation Hours: 9:00am to 10:00am; 5:00pm to 6:00pm.

Medical attention (24 hours) Dial 9911. In an extreme emergency call **3333**.

Photo Shop, Tiffany Deck 6.

Open 9:30am to 1:00pm.

Shore Excursions Desk, Crystal Deck 5

Open today from 9:00am to 7:00pm.

Printed on Recycled Paper

Friday's Bar Hours

Avenue Saloon	5:00pm – Late
Connoisseur Club	5:00pm – Late
Crystal Cove	10:00am – 11:30pm
Palm Court	11:00am – 11:00pm
Starlite Club	5:15pm – Late
Trident Bar	10:00am – 6:00pm

Today's Cocktail Suggestion

Lush Champagne



The first American sparkling wine was produced in Ohio in 1847 (sorry, California).

Roederer Estate Sparking Wine and Elderflower Liqueur.

Available in all open bars and lounges.